

Foundry/Published by
S6 Foundry

Language support
750 Glyphs
8 Balanced weights

Language support
Latin
Western European
Central European
South Eastern European
South American
Oceanian
Pan African
Sami
Esperanto

FLORID

FLORID SANS

Foundry/Published by
S6 Foundry

Language support
Latin
Western European
Central European
South Eastern European
South American
Oceanian
Pan African
Sami

Language support
750 Glyphs
8 Balanced weights

Weights
100 Ultra thin
200 Thin
300 Light
400 Book
500 Regular
600 Medium
700 Bold
800 Black

Foundry/Published by
S6 Foundry

Foundry/Published by
S6 Foundry

Language support
Latin
Western European
Central European
South Eastern European
South American
Oceanian
Pan African
Sami
Esperanto

Weights
100 Ultra thin
200 Thin
300 Light
400 Book
500 Regular
600 Medium
700 Bold
800 Black

Language support
750 Glyphs
8 Balanced weights

FLO

RID

SANS

Contemporary details

minimalist qualities

Foundry/Published by
S6 Foundry

Weights
100 Ultra thin
200 Thin
300 Light
400 Book
500 Regular
600 Medium
700 Bold
800 Black

Language support
Latin
Western European
Central European
South Eastern European
South American
Oceanian
Pan African
Sami
Esperanto

Language support
750 Glyphs
8 Balanced weights

Foundry/Published by
S6 Foundry

Foundry/Published by
S6 Foundry

Language support
Latin
Western European
Central European
South Eastern European
South American
Oceanian
Pan African
Sami
Esperanto

Weights

100 Icia arunturio. Perovit et eata dit dent re, ommos at facearum utes antur apediore rat laboreem ea nosa quatem etuscia et, qui aut quidem cum aut aut volorae vollate eum niatquo del inctum expere, sitati optatio nsequia eperum, occusdam, verchil

200 Icia arunturio. Perovit et eata dit dent re, ommos at facearum utes antur apediore rat laboreem ea nosa quatem etuscia et, qui aut quidem cum aut aut volorae vollate eum niatquo del inctum expere, sitati optatio nsequia eperum, occusdam, verchil

300 Icia arunturio. Perovit et eata dit dent re, ommos at facearum utes antur apediore rat laboreem ea nosa quatem etuscia et, qui aut quidem cum aut aut volorae vollate eum niatquo del inctum expere, sitati optatio nsequia eperum, occusdam, verchil

400 Icia arunturio. Perovit et eata dit dent re, ommos at facearum utes antur apediore rat laboreem ea nosa quatem etuscia et, qui aut quidem cum aut aut volorae vollate eum niatquo del inctum expere, sitati optatio nsequia eperum, occusdam, verchil

500 Icia arunturio. Perovit et eata dit dent re, ommos at facearum utes antur apediore rat laboreem ea nosa quatem etuscia et, qui aut quidem cum aut aut volorae vollate eum niatquo del inctum expere, sitati optatio nsequia eperum, occusdam, verchil

600 Icia arunturio. Perovit et eata dit dent re, ommos at facearum utes antur apediore rat laboreem ea nosa quatem etuscia et, qui aut quidem cum aut aut volorae vollate eum niatquo del inctum expere, sitati optatio nsequia eperum, occusdam, verchil

700 **Icia arunturio. Perovit et eata dit dent re, ommos at facearum utes antur apediore rat laboreem ea nosa quatem etuscia et, qui aut quidem cum aut aut volorae vollate eum niatquo del inctum expere, sitati optatio nsequia eperum, occusdam, verchil**

800 **Icia arunturio. Perovit et eata dit dent re, ommos at facearum utes antur apediore rat laboreem ea nosa quatem etuscia et, qui aut quidem cum aut aut volorae vollate eum niatquo del inctum expere, sitati optatio nsequia eperum, occusdam, verchil**

100 Ultra thin

200 Thin

300 Light

400 Book

500 Regular

600 Medium

700 Bold

800 Black

Language support
750 Glyphs
8 Balanced weights

Tambëloriz.
Bûche de Noël.
Kürtőskalács.
PAZILI.
Gözleme.
Turtă dulce.
Joulupöytä.
BLÅBÄRSSOPPA.

Weights

100 Ultra thin
200 Thin
300 Light
400 Book
500 Regular
600 Medium
700 Bold
800 Black

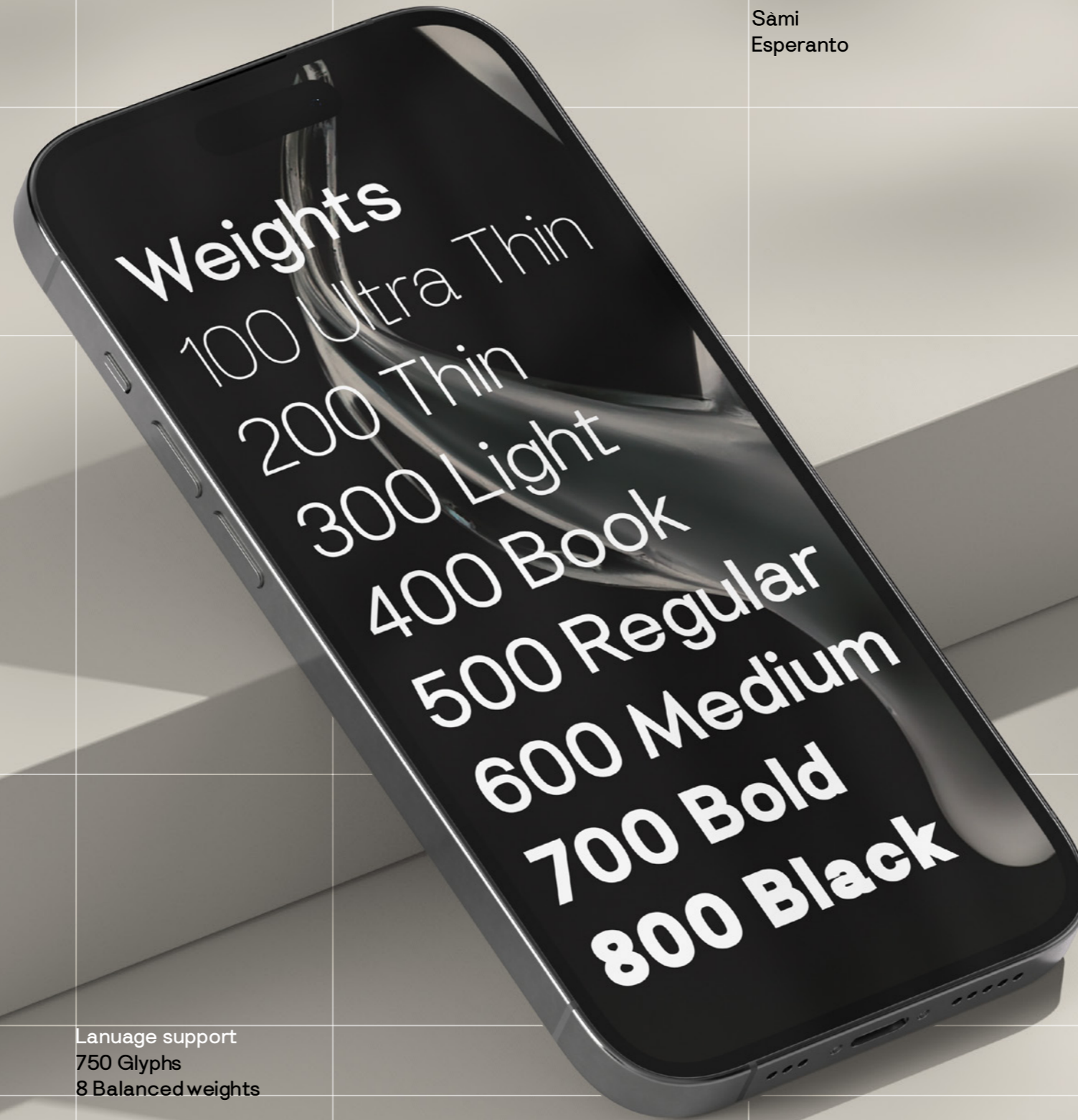
Foundry/Published by
S6 Foundry

Language support
Latin
Western European
Central European
South Eastern European
South American
Oceanian
Pan African
Sami
Esperanto

Foundry/Published by
S6 Foundry

Language support
Latin
Western European
Central European
South Eastern European
South American
Oceanian
Pan African
Sami
Esperanto

Weights
100 Ultra thin
200 Thin
300 Light
400 Book
500 Regular
600 Medium
700 Bold
800 Black



Language support
750 Glyphs
8 Balanced weights

Foundry/Published by
S6 Foundry

Language support
Latin
Western European
Central European
South Eastern European
South American
Oceanian
Pan African
Sami
Esperanto

Language support
750 Glyphs
8 Balanced weights

Weights
100 Ultra thin
200 Thin
300 Light
400 Book
500 Regular
600 Medium
700 Bold
800 Black

Foundry/Published by
S6 Foundry

Foundry/Published by
S6 Foundry

Weights
100 Ultra thin
200 Thin
300 Light
400 Book
500 Regular
600 Medium
700 Bold
800 Black

Language support
Latin
Western European
Central European
South Eastern European
South American
Oceanian
Pan African
Sami
Esperanto

400 600

Florid Sans perfectly balances the **minimalist qualities** associated with grotesques with flair with the width of the counters and comfortable, breathable apertures—which means that throughout weights and sizes, the typeface has great legibility and good contrast between positive and negative space, making it stunningly versatile. With a seamless combination of contemporary details and classic styles, Florid Sans draws inspiration from the mid-century grotesques typefaces, and its solid and straightforward structure is characterized by angular connections between curves and stems. Florid Sans is geometric in nature with humanist qualities rooted in the Swiss tradition.

400

NO NATURAL LINK BINDS
THE MATERIAL, PHONIC
ASPECT OF THE SIGN
(THE SIGNIFIER) TO THE
MENTAL CONCEPT (THE
SIGNIFIED): ONLY A SOCIAL
AGREEMENT APPEARS TO
HOLD THE TWO ELEMENTS
TOGETHER.

Language support
750 Glyphs
8 Balanced weights

400 600
600 800

Et volum untur? **Omnimpores** quisqui dignat dus di doluptatus eatusam, ea conserum volorum aut laborum faccusd aestiis asit, teni cus sed magnien ihillabore nobis sit odist odionse rempore pudisciis molesse sentur, ut laccume nullupt assequasit ea doluptat esende venimus ciatur a doluptas aliscillab ipsa nos ipsape provid que de quis seditissi officipsam volum adit, sim sequis sum et omnia commos dem es ex el molupta quatur autent quo comnis possedit eossedit officia doloribus, que placepudam es eat eos eossitam venietur adipic to incitaturipsante moluptatus con consequo vitis etum que que lacerro vitae. Del ipsape sae verehenisti aut acearciis nitas maiori dolora volupta ssinciis ut velecae. Itatis si delectatur?

Et volum untur? **Omnimpores** quisqui dignat dus di doluptatus eatusam, ea conserum volorum aut laborum faccusd aestiis asit, teni cus sed magnien ihillabore nobis sit odist odionse rempore pudisciis molesse sentur, ut laccume nullupt assequasit ea doluptat esende venimus ciatur a doluptas aliscillab ipsa nos ipsape provid que de quis seditissi officipsam volum adit, sim sequis sum et omnia commos dem es ex el molupta quatur autent quo comnis possedit eossedit officia doloribus, que placepudam es eat eos eossitam venietur adipic to incitatur?
Ebit mil molupta erchil mi, ut quo odi volupta tibus, que cora ditam que volupis nipta ssinciis ut velecae. Itatis si delectatur?

700 800

Et volum untur? **Omnimpores** quisqui dignat dus di doluptatus eatusam, ea conserum volorum aut laborum faccusd aestiis asit, teni cus sed magnien ihillabore nobis sit odist odionse rempore pudisciis molesse sentur, ut laccume nullupt assequasit ea doluptat esende venimus ciatur a doluptas aliscillab ipsa nos ipsape provid que de quis seditissi officipsam volum adit, sim sequis sum et omnia commos dem es ex el molupta quatur autent quo comnis possedit eossedit officia doloribus, que placepudam es eat eos eossitam venietur adipic to incitatur?
Ebit mil molupta erchil mi, ut quo odi volupta tibus, que cora ditam que volupis ni sedi sa ducia pro quamet quam, quis suntios eosam cusam aribus

Et volum untur? **Omnimpores** quisqui dignat dus di doluptatus eatusam, ea conserum volorum aut laborum faccusd aestiis asit, teni cus sed magnien ihillabore nobis sit odist odionse rempore pudisciis molesse sentur, ut laccume nullupt assequasit ea doluptat esende venimus ciatur a doluptas aliscillab ipsa nos ipsape provid que de quis seditissi officipsam volum adit, sim sequis sum et omnia commos dem es ex el molupta quatur autent quo comnis possedit eossedit officia doloribus, que placepudam es eat eos eossitam venietur adipic to incitatur?
Ebit mil molupta erchil mi, ut quo odi volupta tibus, que cora ditam que volupis ni sedi sa ducia pro

500

If the connection between the signifier and signified, the sound and the concept, is arbitrary, what, then, binds the two together? If there is no iconic, natural relationship between the sound “horse” and the concept it invokes, why is the link between them so reliable?

Weights
100 Ultra thin
200 Thin
300 Light
400 Book
500 Regular
600 Medium
700 Bold
800 Black

Foundry/Published by
S6 Foundry

Language support
750 Glyphs
8 Balanced weights

Foundry/Published by
S6 Foundry

Foundry/Published by
S6 Foundry

Weights

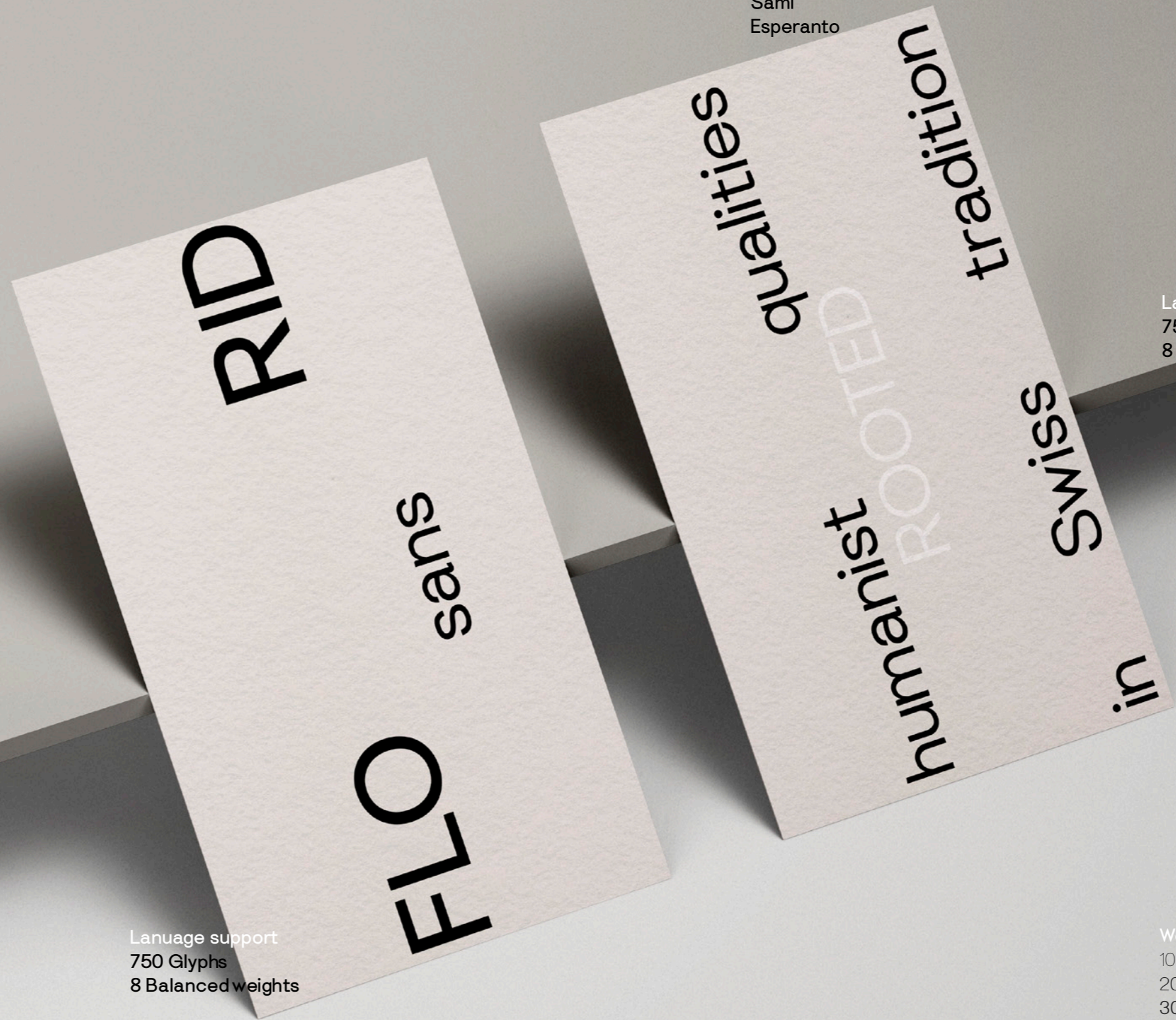
100 Ultra thin
200 Thin
300 Light
400 Book
500 Regular
600 Medium
700 Bold
800 Black

Language support
Latin
Western European
Central European
South Eastern European
South American
Oceanian
Pan African
Sami
Esperanto

Foundry/Published by
S6 Foundry

Language support
Latin
Western European
Central European
South Eastern European
South American
Oceanian
Pan African
Sami
Esperanto

Language support
750 Glyphs
8 Balanced weights



Language support
750 Glyphs
8 Balanced weights

Weights
100 Ultra thin
200 Thin
300 Light
400 Book
500 Regular
600 Medium
700 Bold
800 Black

Foundry/Published by
S6 Foundry

Foundry/Published by
S6 Foundry

Language support
Latin
Western European
Central European
South Eastern European
South American
Oceanian
Pan African
Sami
Esperanto

Weights
100 Ultra thin
200 Thin
300 Light
400 Book
500 Regular
600 Medium
700 Bold
800 Black

ft Q g fr

Language support
750 Glyphs
8 Balanced weights

Language support
Latin
Western European
Central European
South Eastern European
South American
Oceanian
Pan African
Sami
Esperanto

Language support
750 Glyphs
8 Balanced weights

Weights
100 Ultra thin
200 Thin
300 Light
400 Book
500 Regular
600 Medium
700 Bold
800 Black

Foundry/Published by
S6 Foundry

Foundry/Published by
S6 Foundry

Weights
100 Ultra thin
200 Thin
300 Light
400 Book
500 Regular
600 Medium
700 Bold
800 Black

Lanuage support
Latin
Western European
Central European
South Eastern European
South American
Oceanian
Pan African
Sami
Esperanto

AaBbCcDdEeFfGg
HhIiJjKkLlMmNnOo
PpQqRrSsTtUuVv
WwXxYyZz
0123456789£\$%&

AAFAKKK
N°OOS
fffkff
fhkftff
rttkørf
rtsstt

Lanuage support
750 Glyphs
8 Balanced weights

Lanuage support
750 Glyphs
8 Balanced weights

Lanuage support
Latin
Western European
Central European
South Eastern European
South American
Oceanian
Pan African
Sami
Esperanto

Weights
100 Ultra thin
200 Thin
300 Light
400 Book
500 Regular
600 Medium
700 Bold
800 Black

Foundry/Published by
S6 Foundry