

† O U R E † † E

A WHIMSICAL **PISS** AND DELICATE
SHIT FONT, BASED ON LIGHT SLAB
SERIF **BOLLOCKS** LETTERFORMS FROM
THE 18TH AND 19TH **WANK** CENTURY
AND AVAILABLE IN TWO **HUGE DANGLY**
BOLLOCKS VERSIONS, 'NORMAL'
AND **SHIT WANK PISS** 'EXTREME'.
'NORMAL' IS **CRAP** A DELICATE BUT
LEGIBLE FONT. 'EXTREME' IS FULL OF
SHIT LITTLE FLOURISHES **ARSE ARSE**
ARSE WHICH WILL GIVE YOUR DESIGNS
AN **HUGE DOSE OF VENEREAL**
DISEASE EXQUISITE, BUT SLIGHTLY
FRIVOLOUS FEEL **MY ARSE**.

TOURETTE

LOOKED AT ANOTHER SECTION OF TYPE DESIGN THAT IS PARTICULARLY BEAUTIFUL BUT RELATIVELY UNEXPLORED – 19TH CENTURY LIGHT SLAB SERIF FRENCH TYPEFACES.

THE NAME IS FROM THE

OBSESSIVE

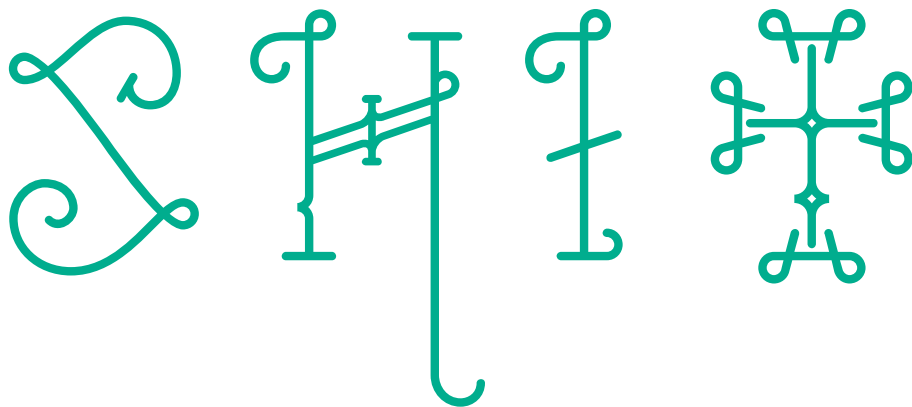
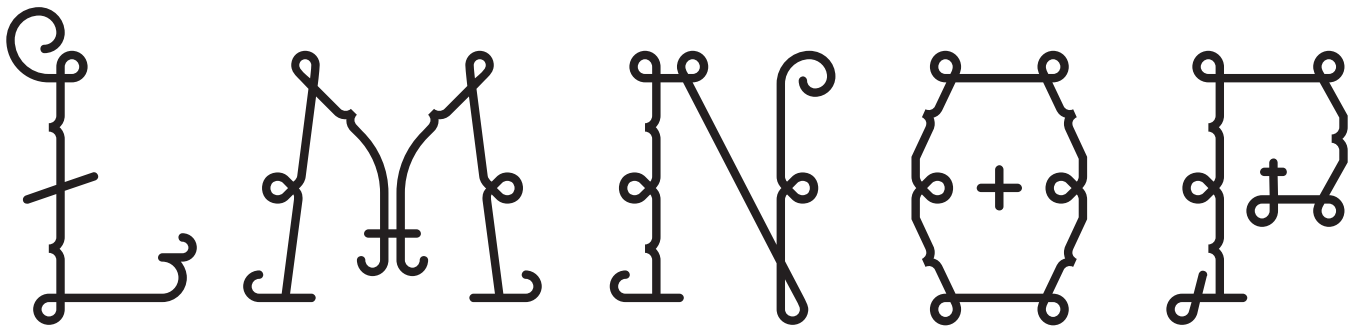
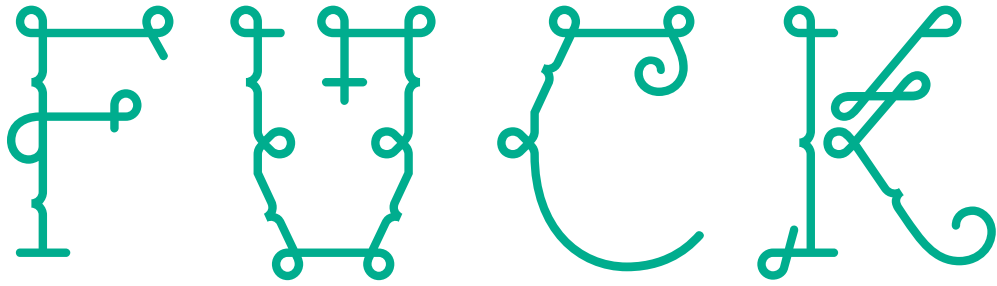
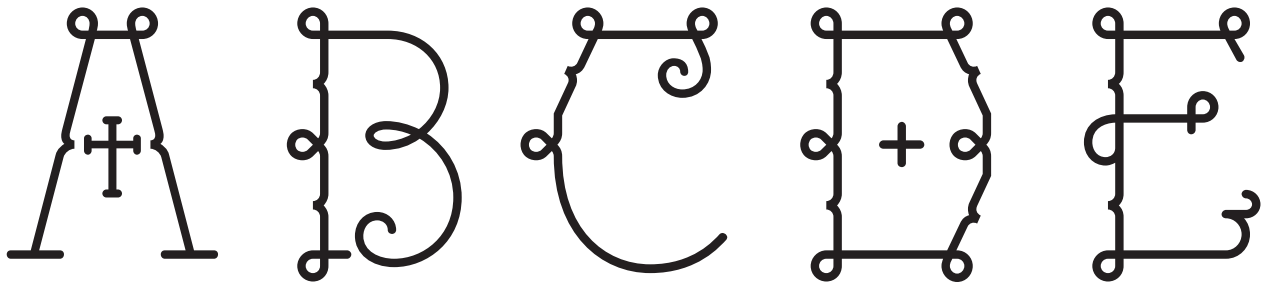
COMPULSIVE

DISORDER TOURETTE'S SYNDROME, WHICH CAN MAKE THE SUFFERER SWEAR INVOLUNTARILY. THE USE FOR THE NAME COMES FROM AN INTEREST IN THE MAGIC POWER OF LANGUAGE – IN PARTICULAR SWEAR WORDS.

THIS PROVIDES A DIRECT CONTRAST TO THE

DELICATELY SHAPED

LETTERFORMS



A B C D E

F U C K

L M N O P

S H I T

V W X Y Z



A

B C D E

F U C K E R

G H I J K L M N O

P Q R S H I † † W A †

U V W A N K E R S X Y Z

a r s e b u g g e r c u n t d e

f a r t g h i j k l m n o p q r s l u t

t w a t u v w x y z 0 1 2 3 4 5 6 7 8 9



A

B C D E

F G H I J K L M N O

P Q R S T U V W X Y Z

1 2 3 4 5 6 7 8 9

0 a b c d e f g h i j k l m n o p q r s t u v w x y z

1 2 3 4 5 6 7 8 9 0

a b c d e f g h i j k l m n o p q r s t u v w x y z

1 2 3 4 5 6 7 8 9 0

Tourette looked at another section of type design that is particularly beautiful but relatively unexplored – 19th century light slab serif french typefaces. The name is from the obsessive compulsive disorder tourette's syndrome, which can make the sufferer swear involuntarily. The use for the name comes from an interest in the magic power of language – in particular swear words. This provides a direct contrast to the delicately shaped letterforms.

Tourette looked at another section of type design that is particularly beautiful but relatively unexplored — 19th century light slab serif french typesets. The name is from the obsessive compulsive disorder Tourette's syndrome, which can make the sufferer swear involuntarily. The use for the name comes from an interest in the magic power of language — in particular swear words. This provides a direct contrast to the delicately shaped letterforms.

